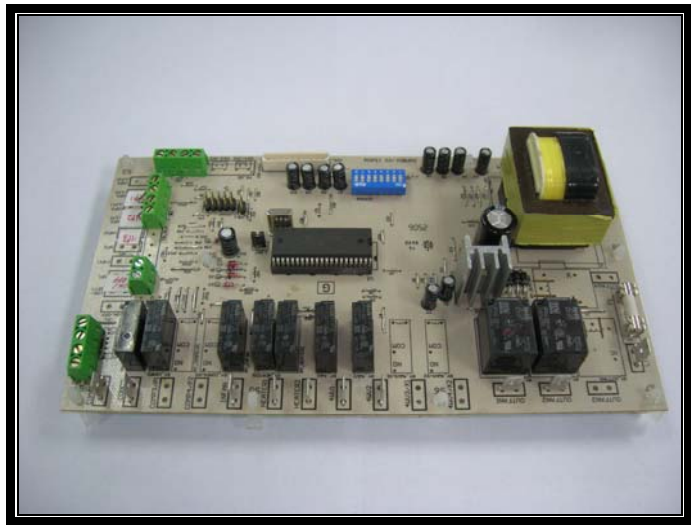


SEQUENTIAL PAC CONTROLLER

The **Sequential PAC** is a control system for multi compressor package air conditioners, used in conjunction with a wired remote control panel. It can balance the loading up to 4 compressors to maximize the life cycle of each component. The sophisticated user interface offers flexibility for the user to customize operating parameters like specific loading patterns, electric heaters, event timers, etc. The corresponding main control board is equipped with protection systems and selection options to suit the local operating conditions. It is designed for ease of installation and low power consumption, suitable for small to medium capacity air-conditioning units.

FEATURES

- Sequential control and balance loading up to 4 stage compressors.
- Selectable stage differential temperatures.
- 2 selectable auxiliary heaters.
- Single speed indoor fan.
- 7 days programmable **timer**.
- **Cool/Heat/Auto/Fan** control, ranging from 16°C to 30°C temperature setting.
- **Cold blast, Spurt heat, Hot start and Hot keep**.
- Wired LCD control panel.
- **Self-diagnostic** feature, **error/warning indications**.
- **Energy saving** function for Cool, Heat and Auto modes.
- Compressor high pressure protection.
- Compressor trip/low refrigerant warning.
- Compressor high temperature protection.
- Outdoor defrost cycle in Heat mode.
- Indoor **antifreeze** protection.
- **Battery backup**. If the power fails, a back up battery will maintain the real time clock and the integrity of the control's data. When power is resumed /switched on again, the unit will automatically restart using the original settings.



SEQUENTIAL MAIN BOARD (SQMB)